



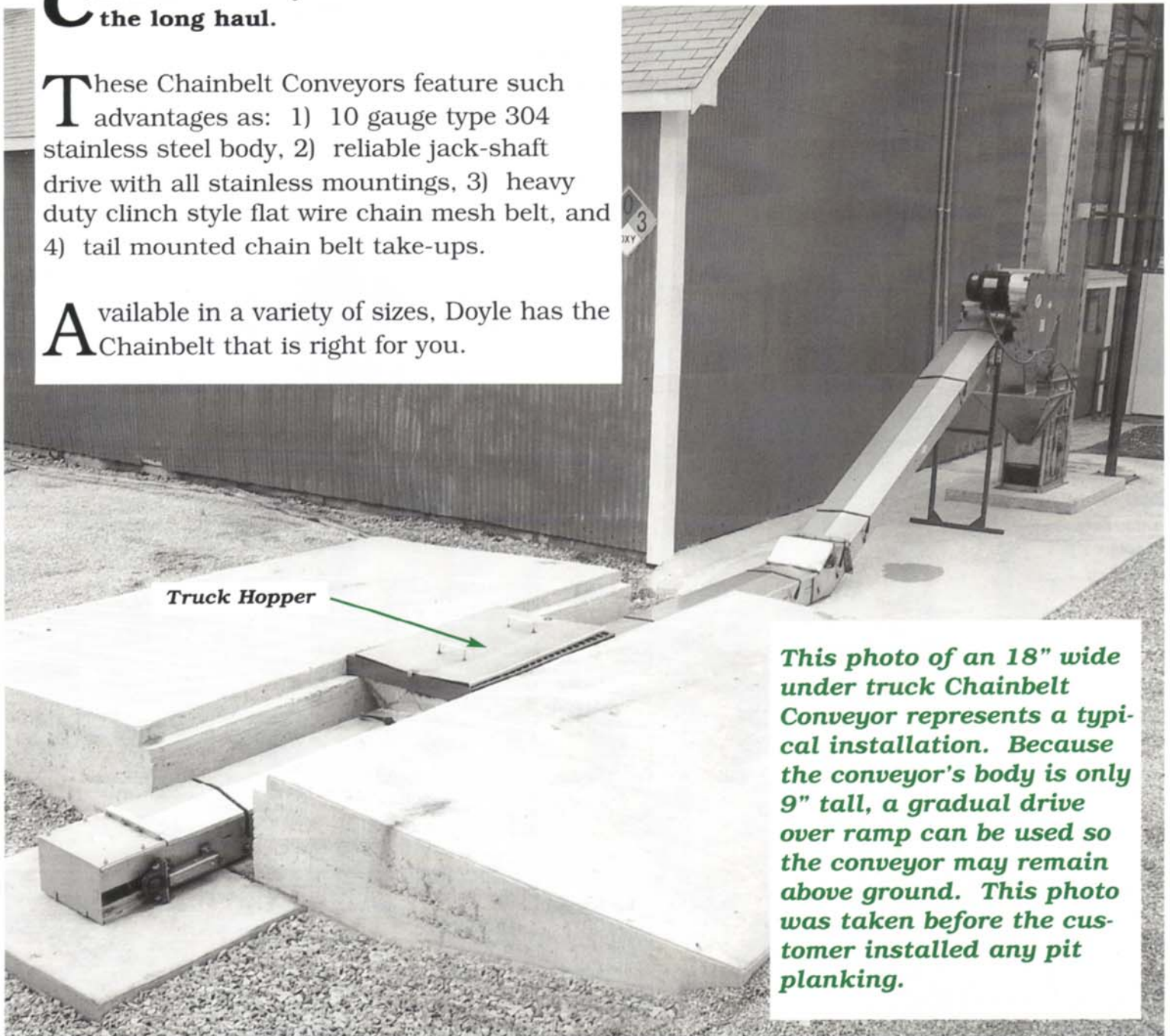
CHAINBELT CONVEYORS

This Heavy Duty Flat Wire Chainbelt Conveyor Is Designed To Provide Years Of Dependable Service

Chainbelt Conveyors that are built for the long haul.

These Chainbelt Conveyors feature such advantages as: 1) 10 gauge type 304 stainless steel body, 2) reliable jack-shaft drive with all stainless mountings, 3) heavy duty clinch style flat wire chain mesh belt, and 4) tail mounted chain belt take-ups.

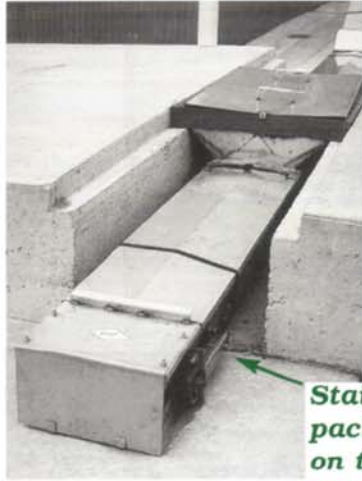
Available in a variety of sizes, Doyle has the Chainbelt that is right for you.



This photo of an 18" wide under truck Chainbelt Conveyor represents a typical installation. Because the conveyor's body is only 9" tall, a gradual drive over ramp can be used so the conveyor may remain above ground. This photo was taken before the customer installed any pit planking.

Doyle Chainbelt Conveyor Detail

LOW PROFILE - The Chainbelt's body is only 9" tall, so a deep pit is not required to install this conveyor.



Stainless grease packed take-ups on tail section.

TRANSITION SECTION DETAIL - The big 9" diameter transition rollers are gentle to the chainbelt.

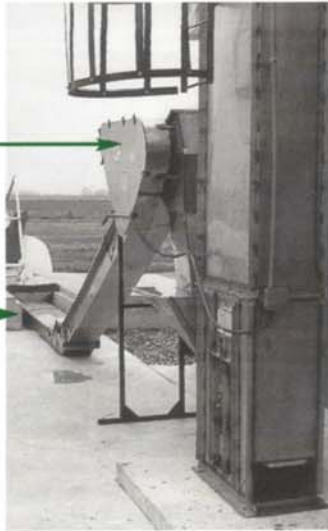


ENVIRONMENTAL COMPLIANCE - The totally enclosed construction of the Doyle Chainbelt eliminates product spillage.

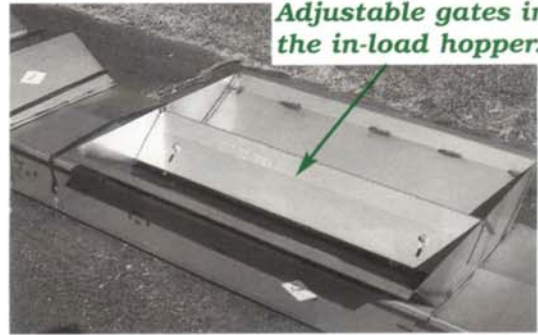
FLOW CONTROL HOPPER - Rail or truck hoppers have slide gates for controlling flow rate. Hoppers can then be flood fed.

Stainless guards and motor mount.

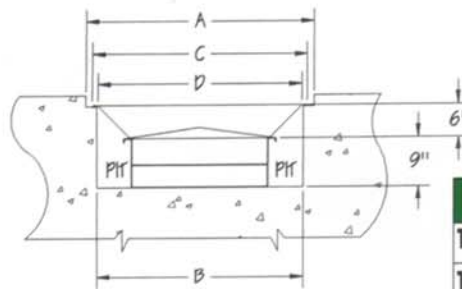
Fully enclosed bottom pan means no spillage.



Adjustable gates in the in-load hopper.



Cross Section View



HOPPER END VIEW
HOPPER IS 44" LONG

	A	B	C	D
12"	29"	26"	27"	25"
18"	35"	32"	33"	31"
24"	41"	38"	39"	37"



Doyle Equipment Mfg. Co., Inc.

P.O. Box 3024 • 3900 Broadway

Quincy, Illinois, USA 62305

217-222-1592, Fax 217-223-3655

E-mail: doyle@rnet.com • Website: www.doylemfg.com